

IBOTAC–Industrial floors



Laying

Easy and quick installation

Loose laying on damp, cracked and oily undergrounds

Laying during operation through slab systems

Features

Resistant to almost all oils, greases, acids and alkalis

Flame retardant (Bfl-s1)

Load

Suitable for forklift traffic in floating laying

Suitable for heavy traffic in glued laying

Due to high point load also heavy production machines can be installed

Usage

Durable and robust, thus very economical
–protective for joints and back– sound-reducing

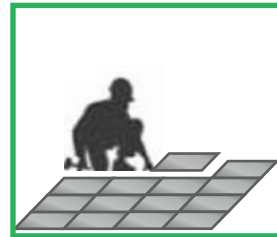
Non-slip due to surface structure

Ibotac®

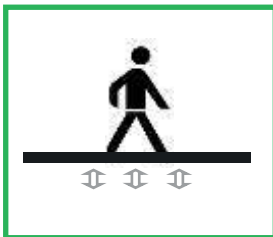
Facts about our flooring



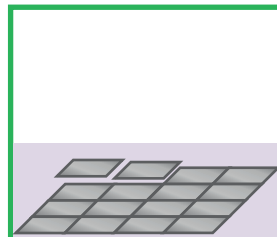
Loadable up to 15 tons when laid loose, thanks to different panel thicknesses. For forklift, pallet truck, car and truck.



Quick and easy laying.
You can lay in small sections, without disrupting the work flow.
Rooms do not have to be empty



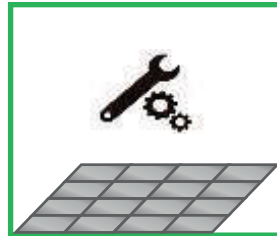
Ergonomic standing and walking.
Gentle on joints, back and knees.
Work longer without fatigue. Foot warm.



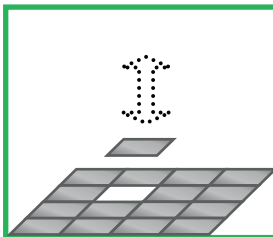
Easy to install on oily, cracked and broken subfloors, as well as on old floorings



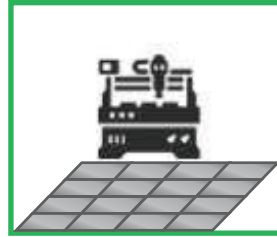
Noise reduction in very noisy workplaces such as production and warehouse operations.



Gentle on falling tools. Valuable production parts or tools can be set down without scratching.



Easy maintenance.
Our system makes it possible to replace only individual, damaged plates.



Heavy production machines can be set up due to high point load.
Absorbs vibrations.



Resistant to alkalis, greases, acids and oils.
Step and click, liquid-tight floor.



Thanks to the special surface, our floor is effortless to keep clean.
Suitable for machine cleaning.

CONTENT

| | |
|---------------------------------------|------|
| What is Ibotac®Floor | 6 |
| Ibotac®STEP | 8 |
| Ibotac®FAST | 10 |
| Ibotac®KLICK | 12 |
| Additional products | 9,11 |
| Object areas, fitness center, offices | 14 |
| Production Workshop | 16 |
| Car workshop | 20 |
| Loads | 22 |
| Warehouse | 24 |
| Foodproducts | 26 |
| Workshop Laying | 28 |
| Industry | 30 |
| Ramps, ledges | 32 |
| Auxiliary materials | 34 |
| Redevelopment | 36 |
| Technical data | 39 |

Ibotac®

Plastic sheets for robust floor systems

Industrial flooring made of high quality recycled PVC material.

Ibotac® specializes in the design and manufacture of high quality plastic flooring for the industrial and commercial sectors. Our plastic floors are made of high quality recycled PVC materials.

Ergonomic, durable and resistant to almost all oils, greases, acids and alkalis. With the competence of many years of experience, we are happy to advise you comprehensively and individually. We secure our market position, which has remained stable over the years, through our willingness to keep pace with new developments.

We also invest in the latest technologies.

The interlocking connection of the PVC – floor tiles ensure that the flooring can be laid on any flat and hard subfloor, quickly and easily loose (floating).

We offer loose lay plastic panels for workshops, garages and industrial halls.

They are absolutely suitable for all purposes in trade and industry.

For example, are you looking for a floor for the renovation of your production facility that is durable and resistant to oil, grease, acids and alkalis? Then we are exactly the right contact for you. Our floorings meet the most stringent requirements. With our first-class floors, we offer you the perfect solution for production halls and warehouses, but also for exhibition and sales areas.



Operational areas

Industrial, commercial, workshop, production area, warehouse, fitness center, food processing companies, exhibition and sales areas, etc.

Special operational areas

The problem solution for damp, damaged and oily substrates and for magnesite-screeds.

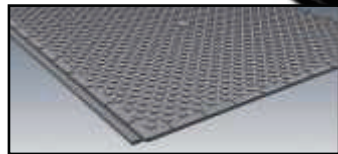
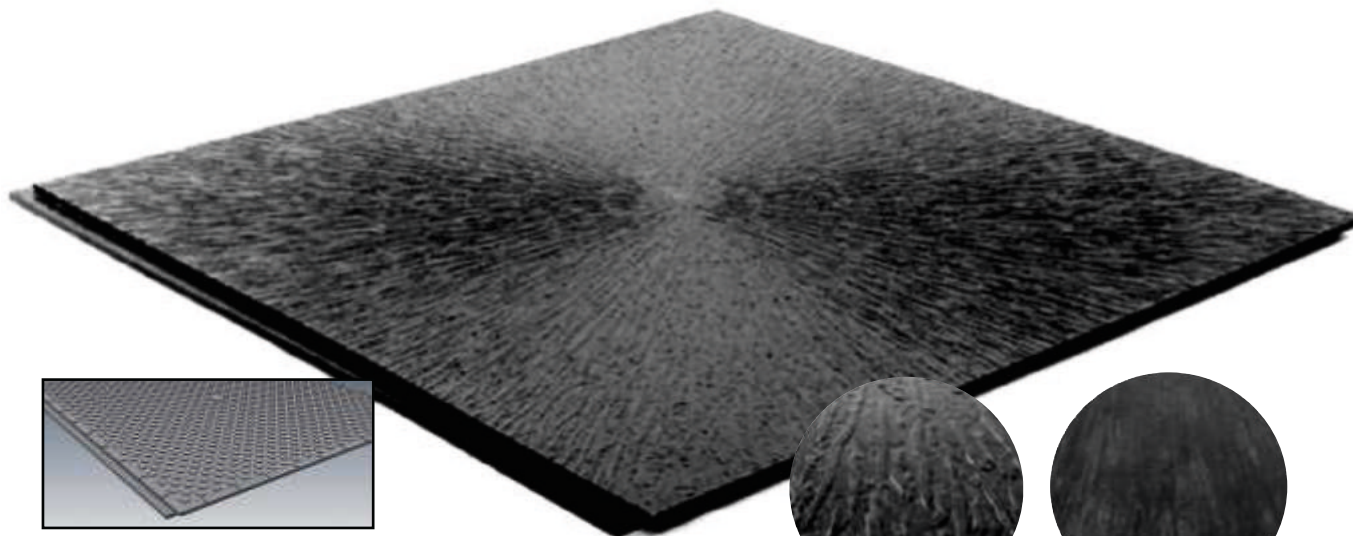
Loose laying for damp, cracked and oily substrates.

Well suited for sales areas due to different colors and special optics.

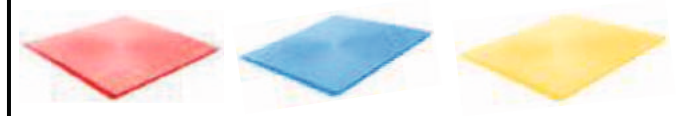
Ibotac®STEP

- Available in **tree bark texture** or **smooth** surface.
- Standard colors:
- Dimensions: 49 cm x 49 cm

Black, dark grey and grey



red, blue, yellow, other colors available on request.



Tree bark texture

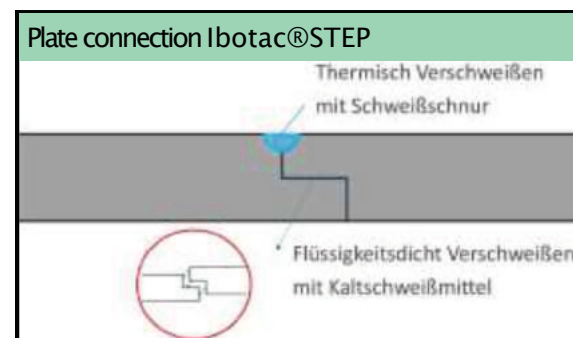


Smooth

The Ibotac®STEP industrial floor is made of high-quality recycled PVC material and is durable. It is resistant to almost all alkalis, greases, acids and oils.

Features of the Ibotac®STEP industrial floor:

- STEP: 8 mm, 10 mm und 12,5 mm thickness
- Liquid-tight floors
- Can be welded with a joint cord
- Gentle on joints and back
- Loose laying on oily, damp and cracked undergrounds
- Can be driven over by transporters and trucks

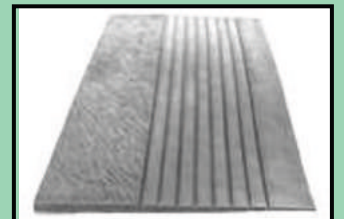


Ibotac®STEP

Additional products:

Ibotac ®Ramp Step

- From PVC
- In different thicknesses suitable for Ibotac floors
- Increasing from 2mm to floor thickness



Ibotac®Stainless steel ramps

- Rust free
- Adjusted to the pad thickness
- Multiple lining for higher stability
- Can be used for heavy to extreme loads caused by e.g. forklift trucks, trucks, ...



Ibotac®Welding cord

- Adapted to the specific properties of Ibotac floors such as hardness
- Resistant to acids, alkalis, oils and greases
- Available in many colors



Ibotac®Iboflex 209

- Special adhesive developed for Ibotac floors
- Can be used on damp undergrounds
- Processing from +5°C to +40°C
- High resistance



Ibotac®Iboflex 219

- Special joint compound
- For gluing and sealing the Ibotac click floorings
- For sealing and bonding for interior and exterior use
- Adheres to damp undergrounds



Ibotac®Ibo-Floorcleaner

- Special cleaner for conditioning, daily wiping and sealing.
- Improves antistatic properties
- Can be polished
- High efficiency



Cold welding agent

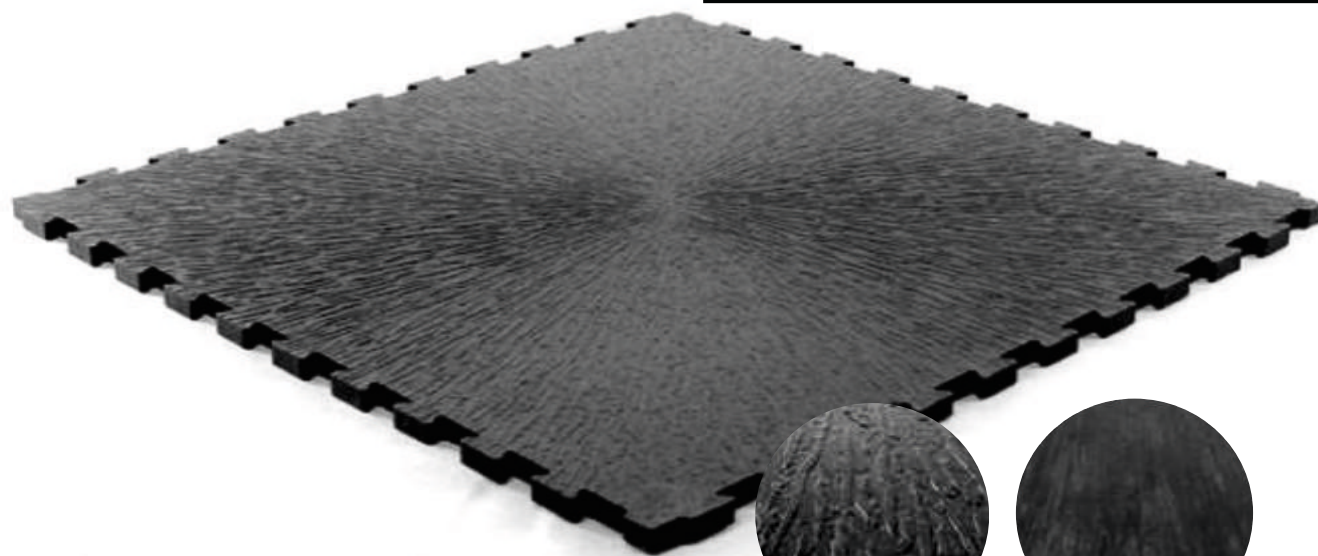
- Liquid or as paste
- For bonding and sealing the Ibotac®-Step floorings



Ibotac®FAS

- Available in **tree bark texture** or **smooth** surface.
- Standard colors:
- Dimensions: 49 cm x 49 cm

black, dark grey and grey

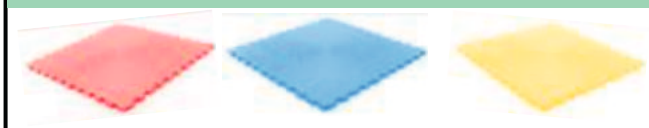


Tree bark texture



smooth

red, blue, yellow, other colors available on request.

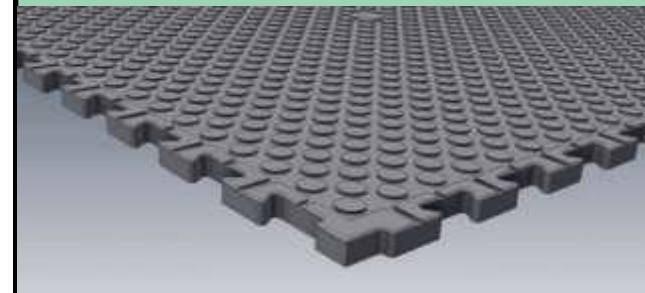


Ibotac®FAST industrial floor is made of high quality recycled PVC material. It is resistant, like the majority of the other industrial floors, to almost all greases, acids, alkalis and oils.

Features of the Ibotac®Fast industrial floor:

- FAST ; 7 mm, 10 mm und 12,5 mm thickness
- Diffusion-open floors
- Quick and easy to install
- Simple and easy cleaning
- Non-slip due to surface structure and gentle on falling tools
- Foot warm and heat insulating

Ibotac®FAST Steam back

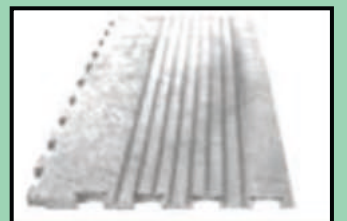


Ibotac®FAST

Additional products:

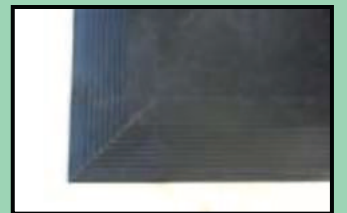
Ibotac ®Ramp Fast

- Made of PVC
- In different thicknesses suitable for Ibotac® floors
- Increasing from 2mm to coating thickness



Ibotac®Corner ramp Fast

- Suitable for Ibotac®Fast coatings...
- For areas lying freely in the hall, e.g. parking areas...
- Made by hand



Ibotac®Stainless steel ramps

- Rust free
- Adapted to coating thickness
- Multiple lining for higher stability
- Can be used for heavy to extreme loads caused by e.g. forklift trucks, trucks, ...



Ibotac®Iboflex 209

- Special adhesive developed for Ibotac floors
- Can be used on damp undergrounds
- Processing from +5°C to +40°C
- High resistance



Ibotac®Iboflex 219

- Special joint compound
- For bonding and sealing the Ibotac®-click floorings
- For sealing and bonding indoors and outdoors
- Adheres to damp undergrounds



Ibotac®Ibo-Floorcleaner

- Special cleaner for conditioning, daily wiping and sealing.
- Improves antistatic properties
- Can be polished



Cold welding agent

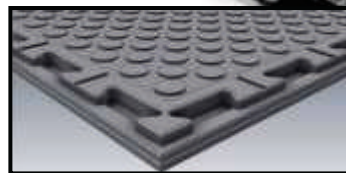
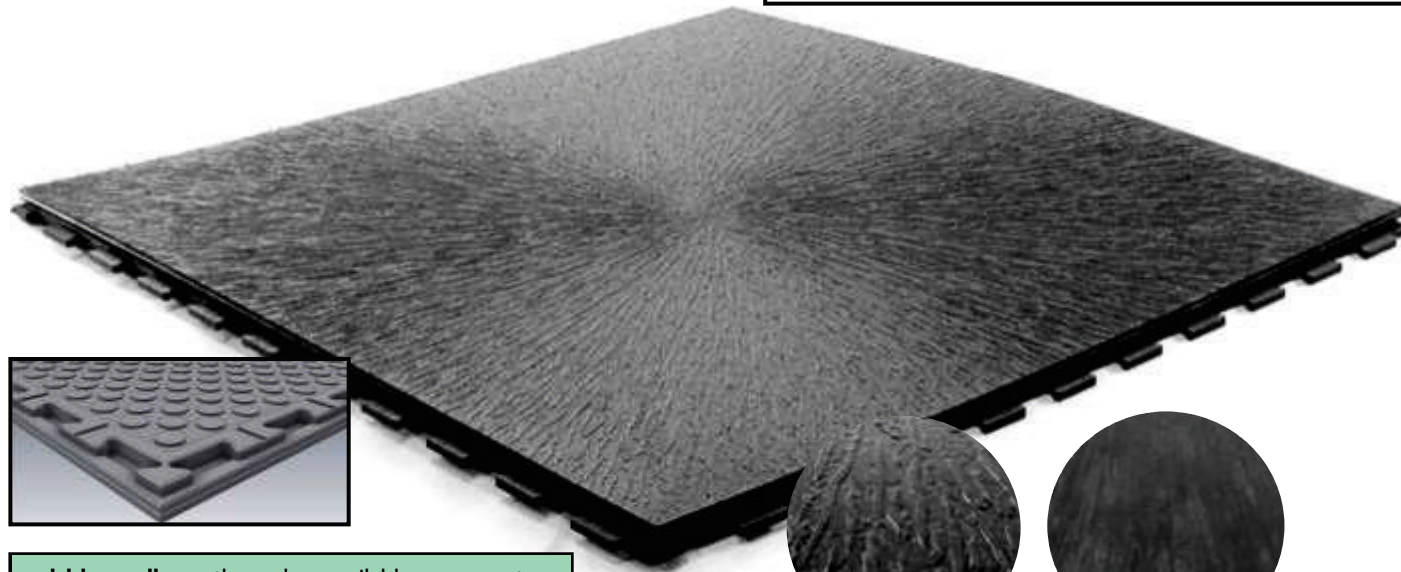
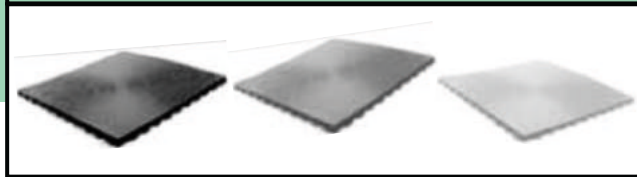
- Liquid or as paste
- For bonding and sealing the Ibotac®-Step floorings



Ibotac®KLICK

- Available in **tree bark texture** or **smooth** surface.
- Standard colors:
- Dimensions: 49 cm x 49 cm

Black, grey and grey



red, blue, yellow, other colors available on request.



Tree bark texture

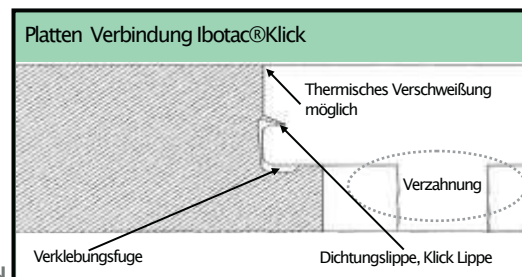
smooth

Ibotac®Klick is a new floor on the market. We have used our many years of experience to get such a new, better connection of the individual elements. We have succeeded in this! The connection is unique on the market, and that is why we have protected it (utility patent)!

KLICK; 8mm, 10 mm, 15 mm thickness

What is special about the new system?

- The joint system has a built-in joint with a sealing lip, which can be filled with the Ibotac Hybrid-1K joint sealant. Then you get a moisture-proof coating without having to weld thermally!
- If the joints are glued with the Ibotac Hybrid-1K joint sealant and then thermally welded, you get a moisture-proof and very strongly bonded industrial floor for highest loads.
- This floor can be welded, glued together or simply floated, regardless of whether you need a diffusion-open or moisture-proof floor.
- The laid floor can be easily removed and laid elsewhere!

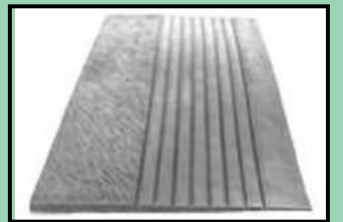


Ibotac®KLICK

Additional products:

Ibotac ®Ramp KLICK

- Made of PVC
- In different thicknesses suitable for Ibotac® floors
- Increasing from 2mm to coating thickness



Ibotac®Stainless steel ramps

- Rust free
- Adapted to coating thickness
- Multiple lining for higher stability
- Can be used for heavy to extreme loads caused by e.g. forklift trucks, trucks, ...



Ibotac®Welding cord

- Adapted to the specific properties of Ibotac floors such as hardness
- Resistant to acids, alkalis, oils and greases
- Available in many colors



Ibotac®Iboflex 209

- Special adhesive developed for Ibotac floors
- Can be used on damp undergrounds
- Processing from +5°C to +40°C
- High resistance



Ibotac®Iboflex 219

- Special joint compound
- For bonding and sealing the Ibotac®-click floorings
- For sealing and bonding indoors and outdoors
- Adheres to damp undergrounds



Ibotac®Ibo-Floorcleaner

- Special cleaner for conditioning, daily wiping and sealing.
- Improves antistatic properties
- Can be polished



Cold welding agent

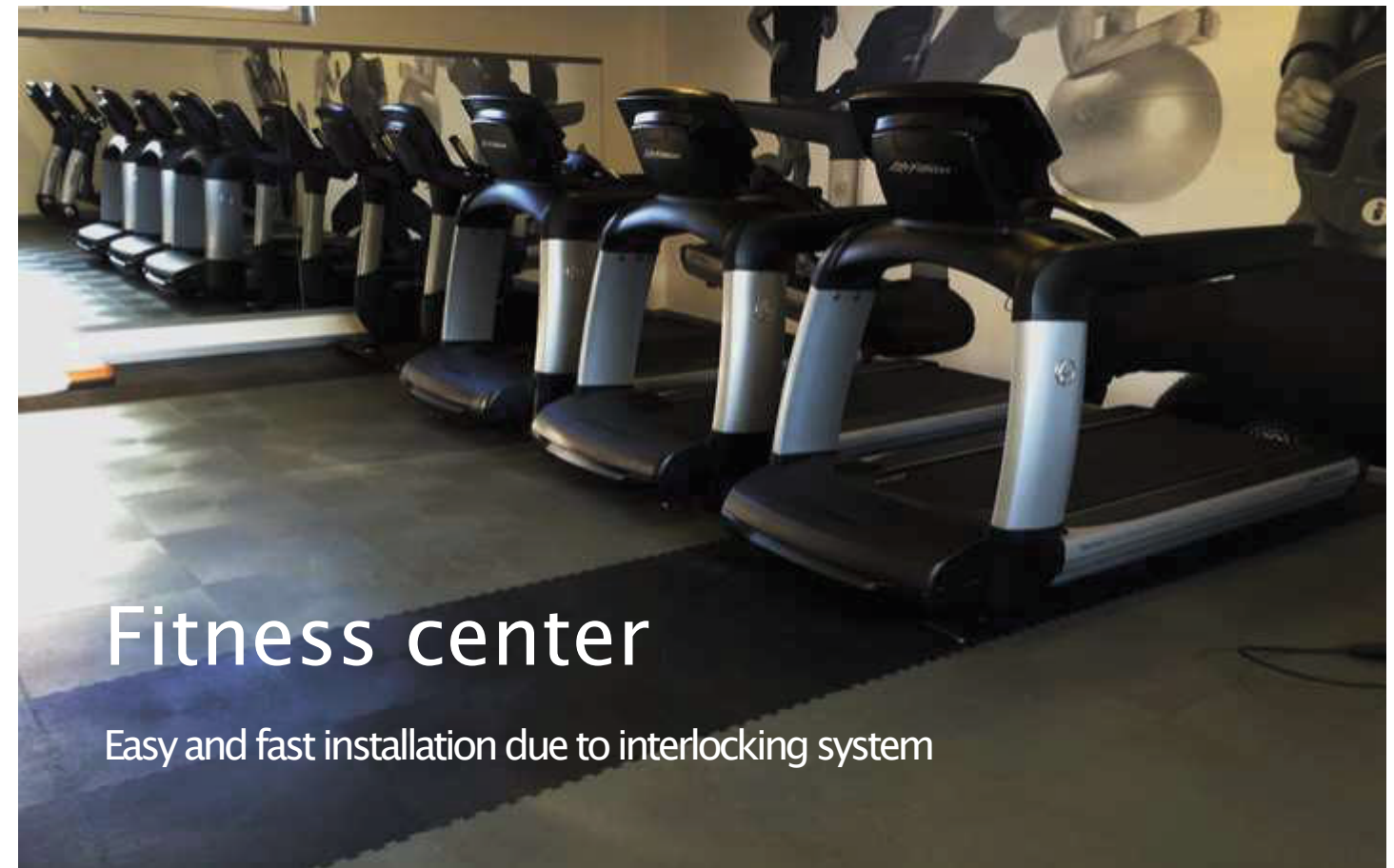
- Liquid or as paste
- For bonding and sealing the Ibotac®-Step floorings





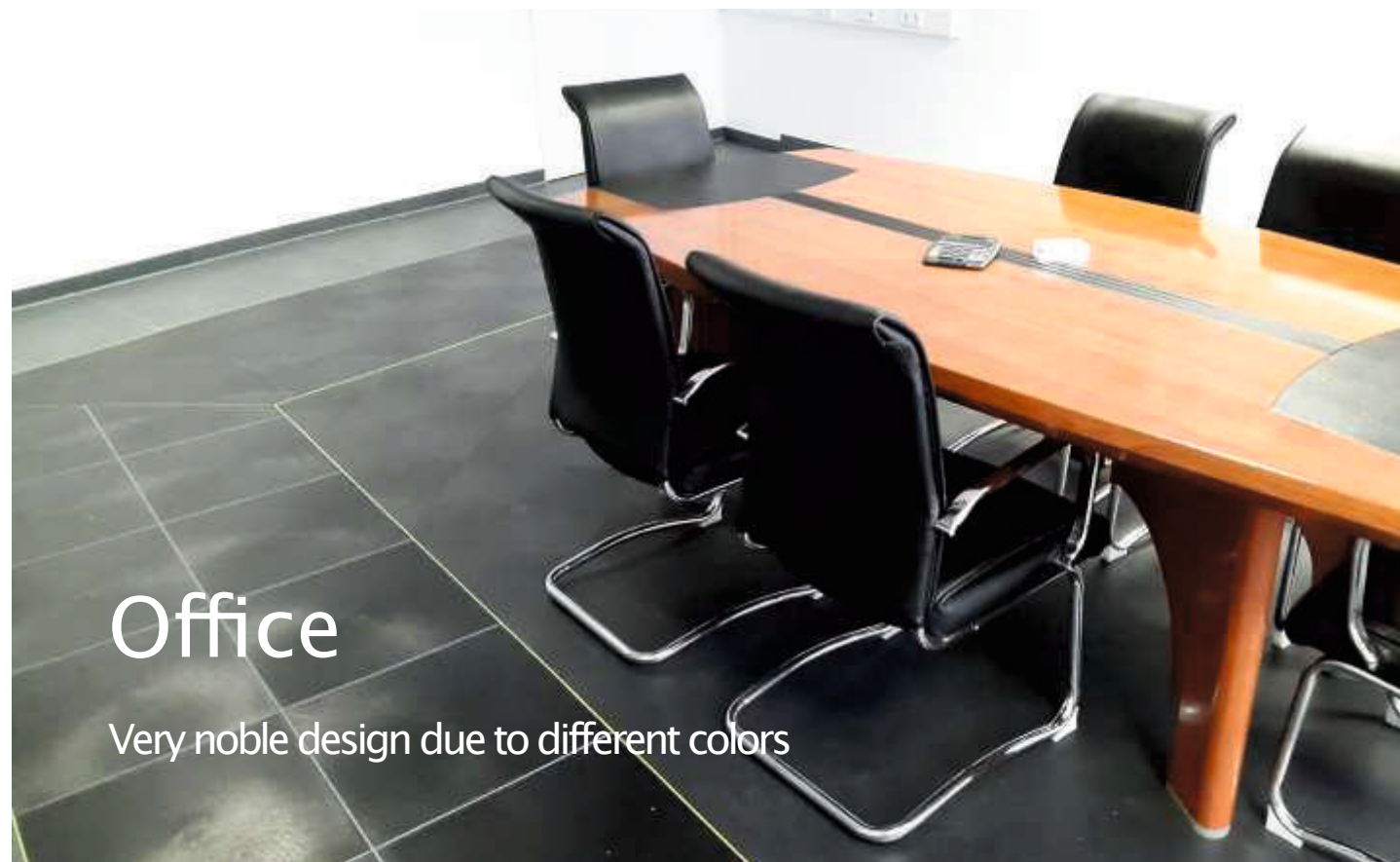
Exhibition space

With the special IBOTAC® optics and light reflection, even dark colors produce a harmonious image



Fitness center

Easy and fast installation due to interlocking system



Office

Very noble design due to different colors



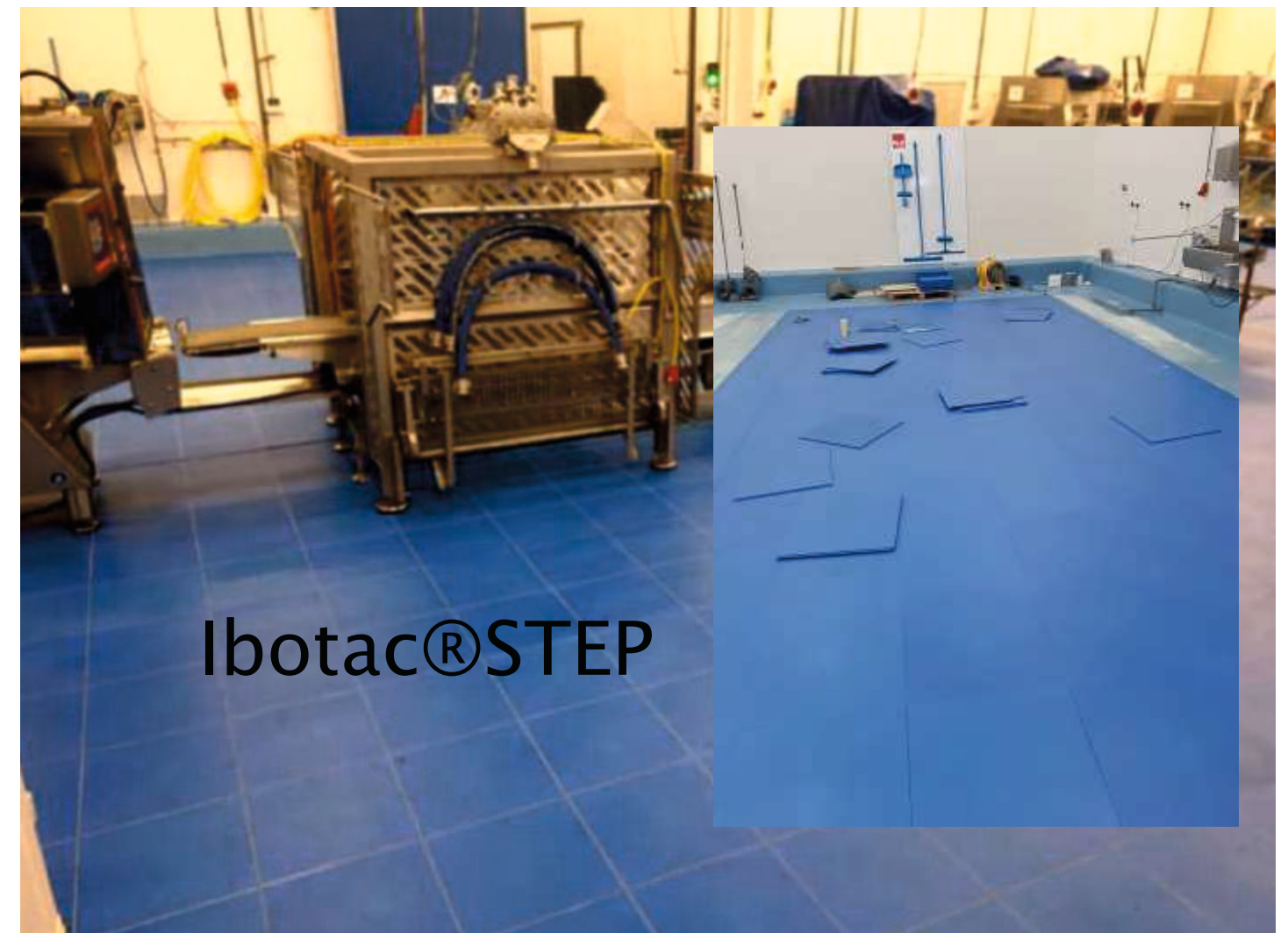
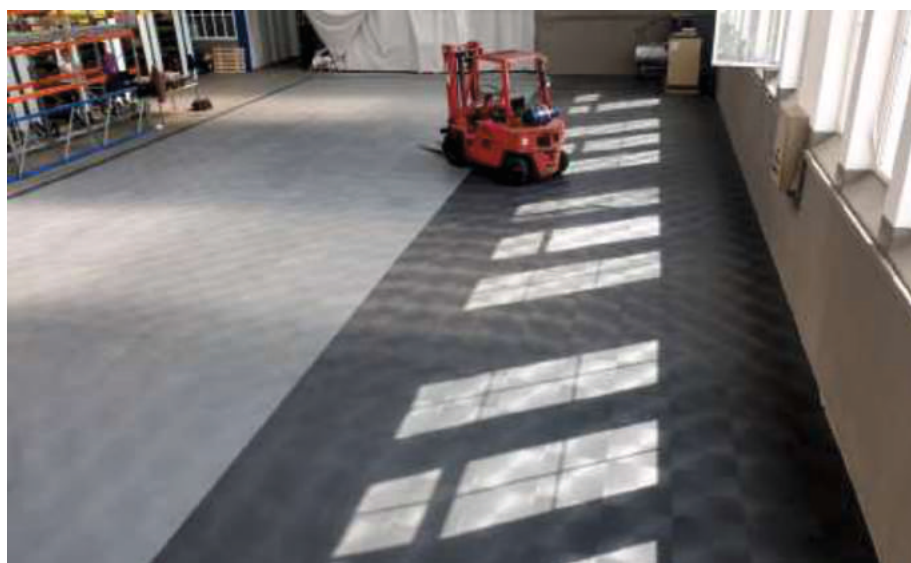
Strong and robust

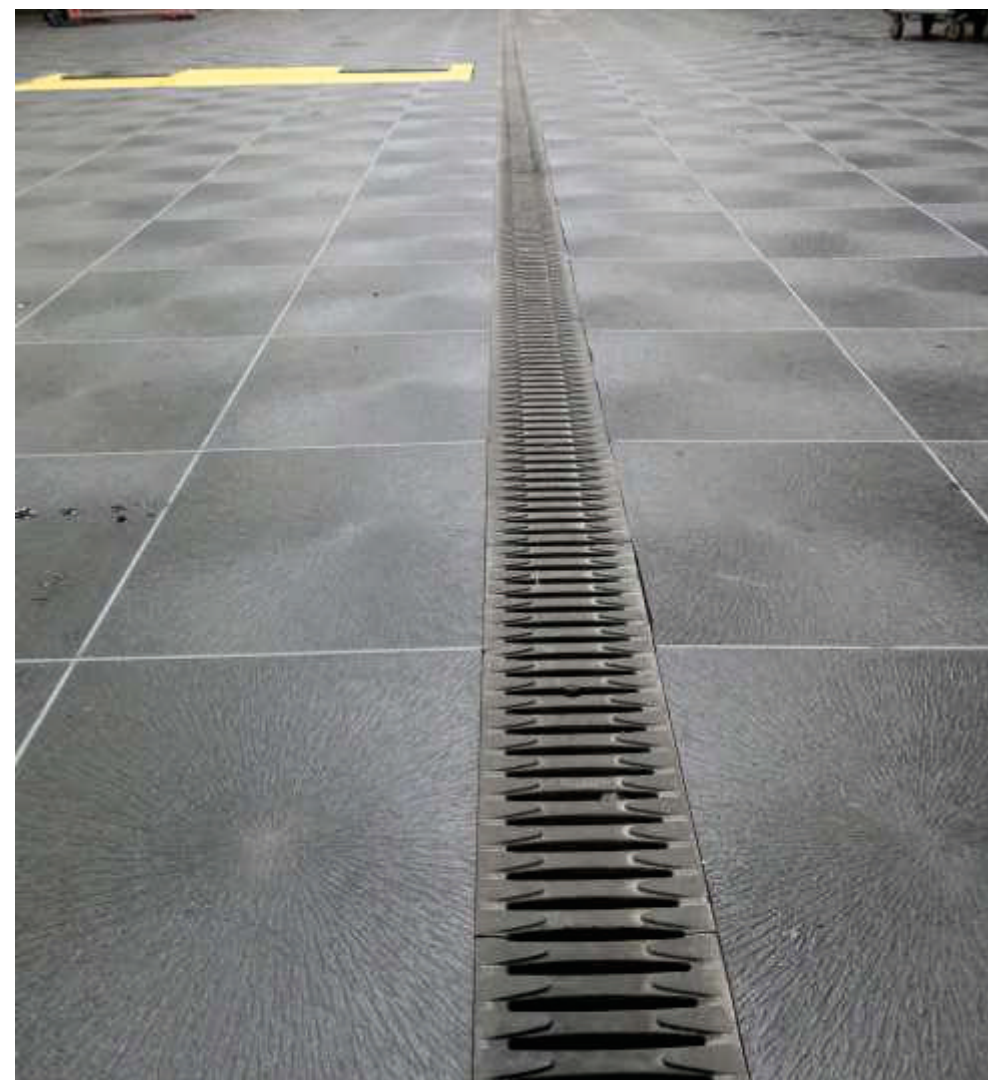
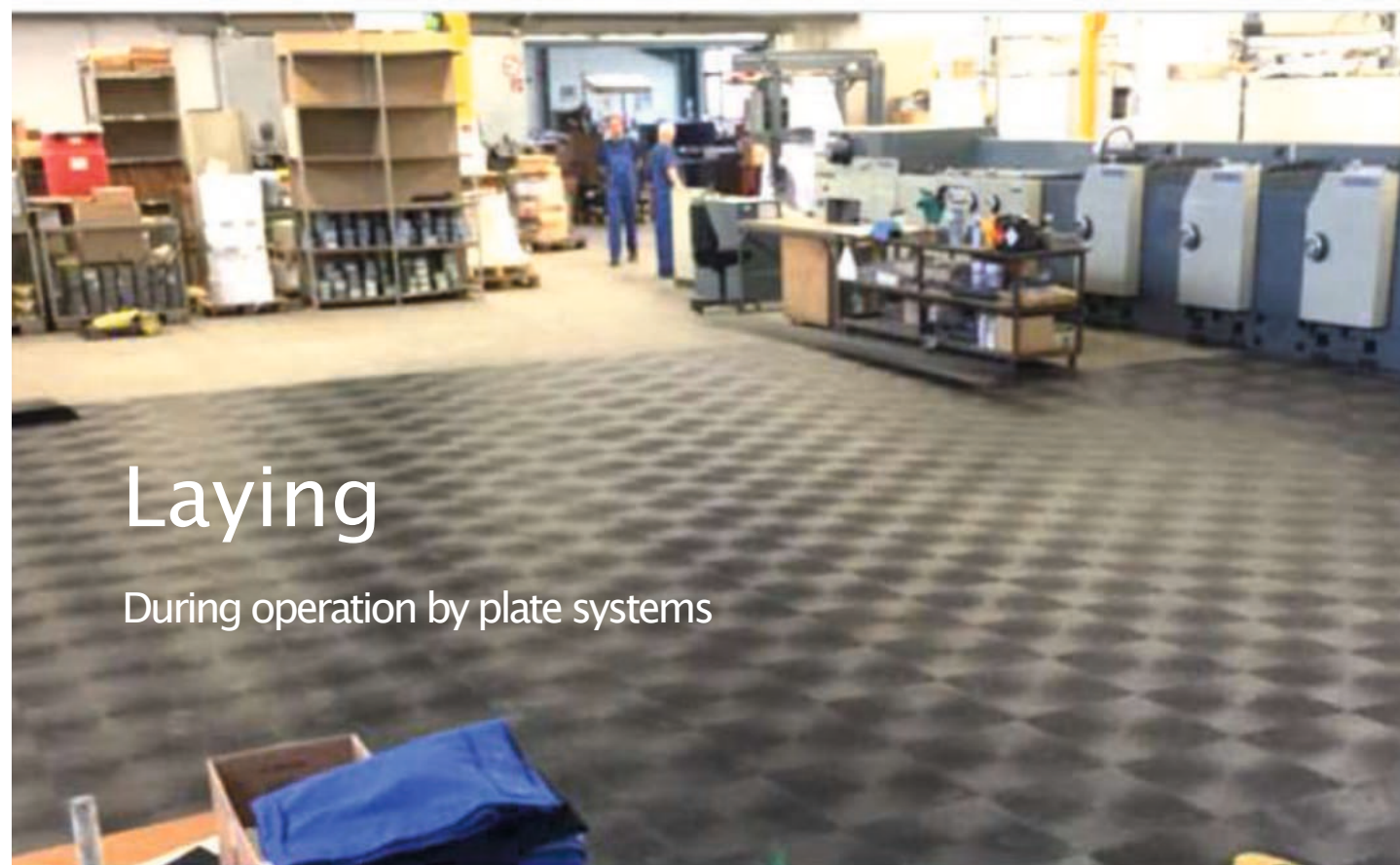
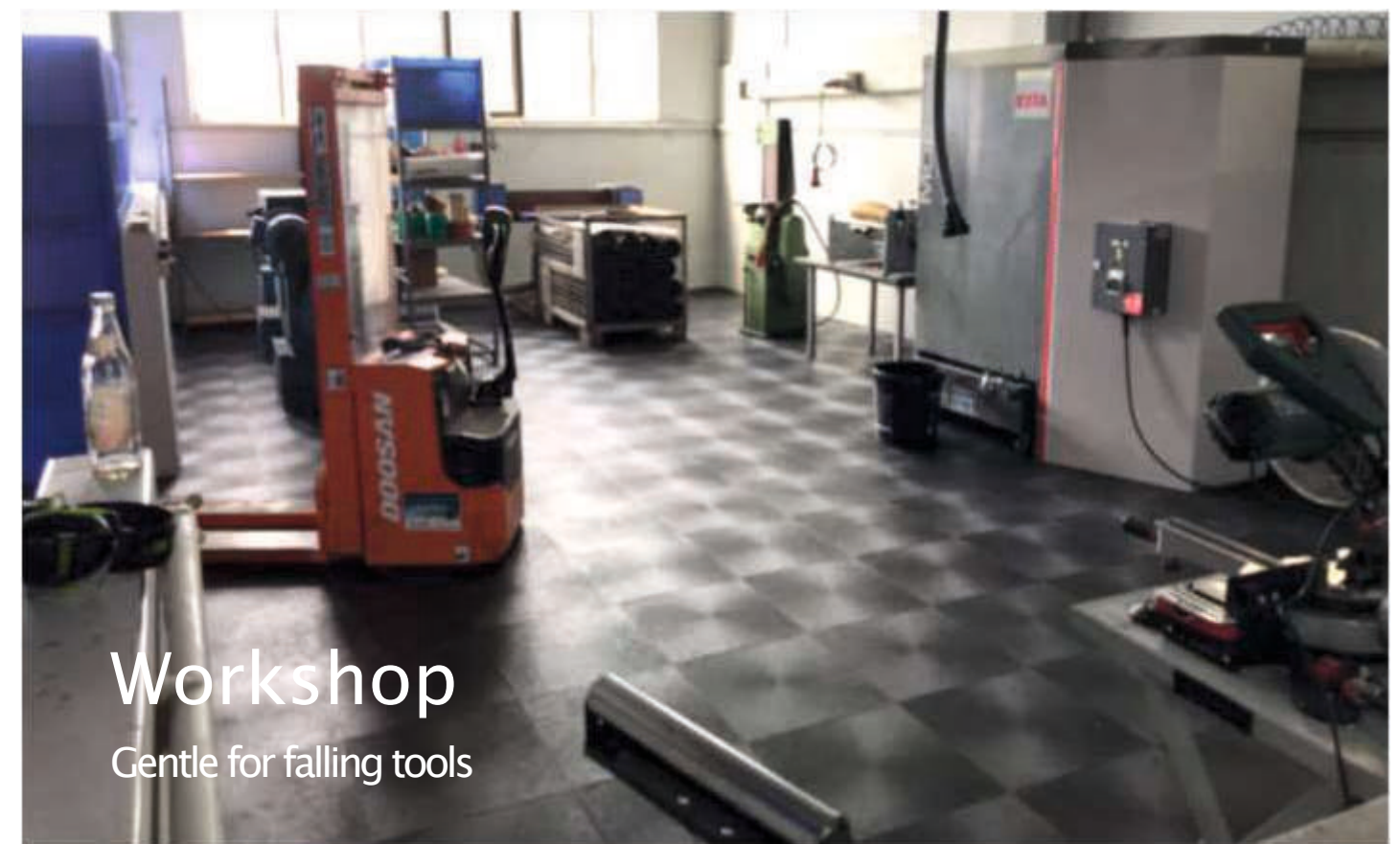
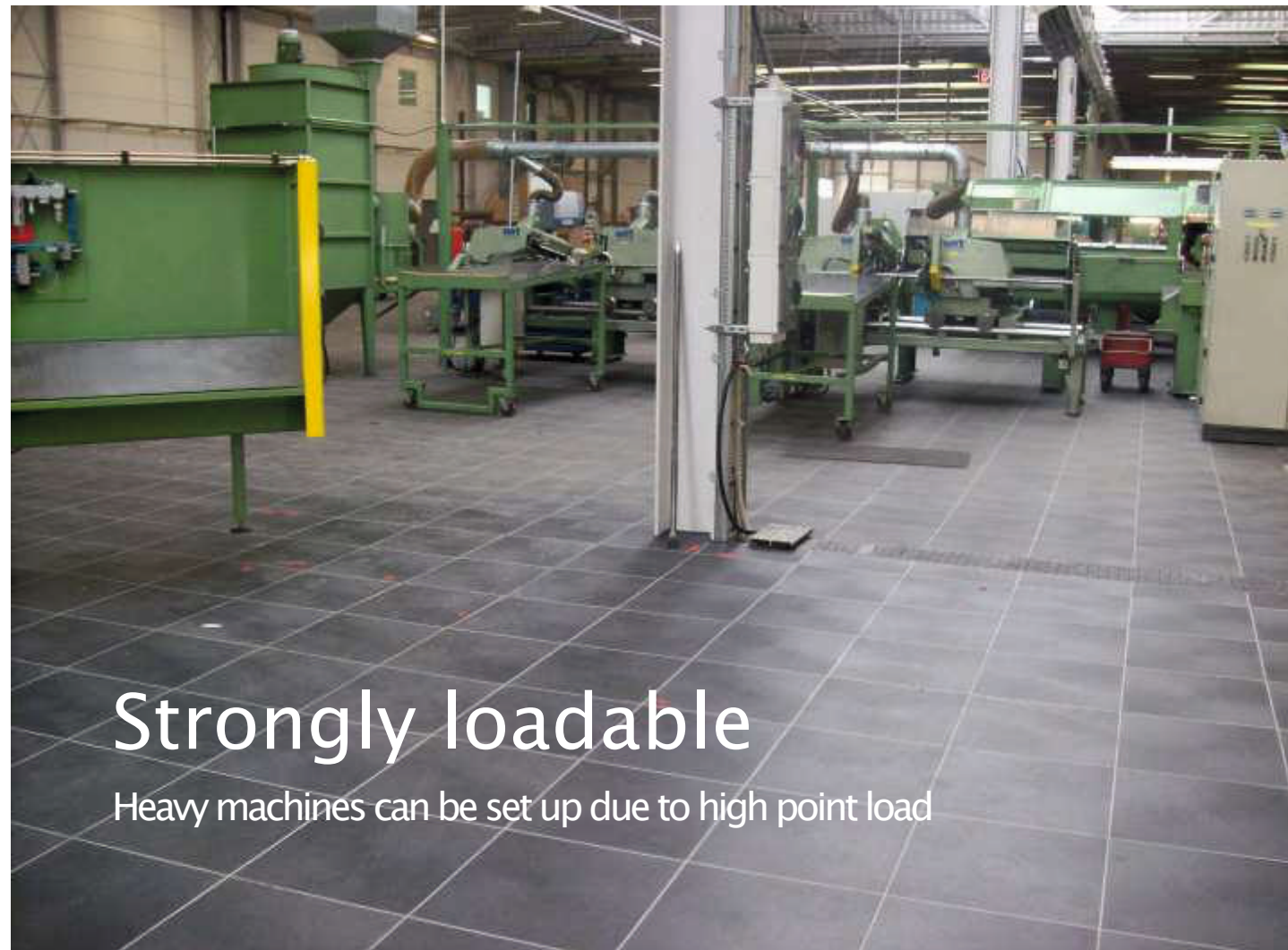
Resistant, durable and stable



Ibotac®FAST

This way you quickly get a dust-free, sound-reducing floor that can be loaded with heavy conveyor vehicles!



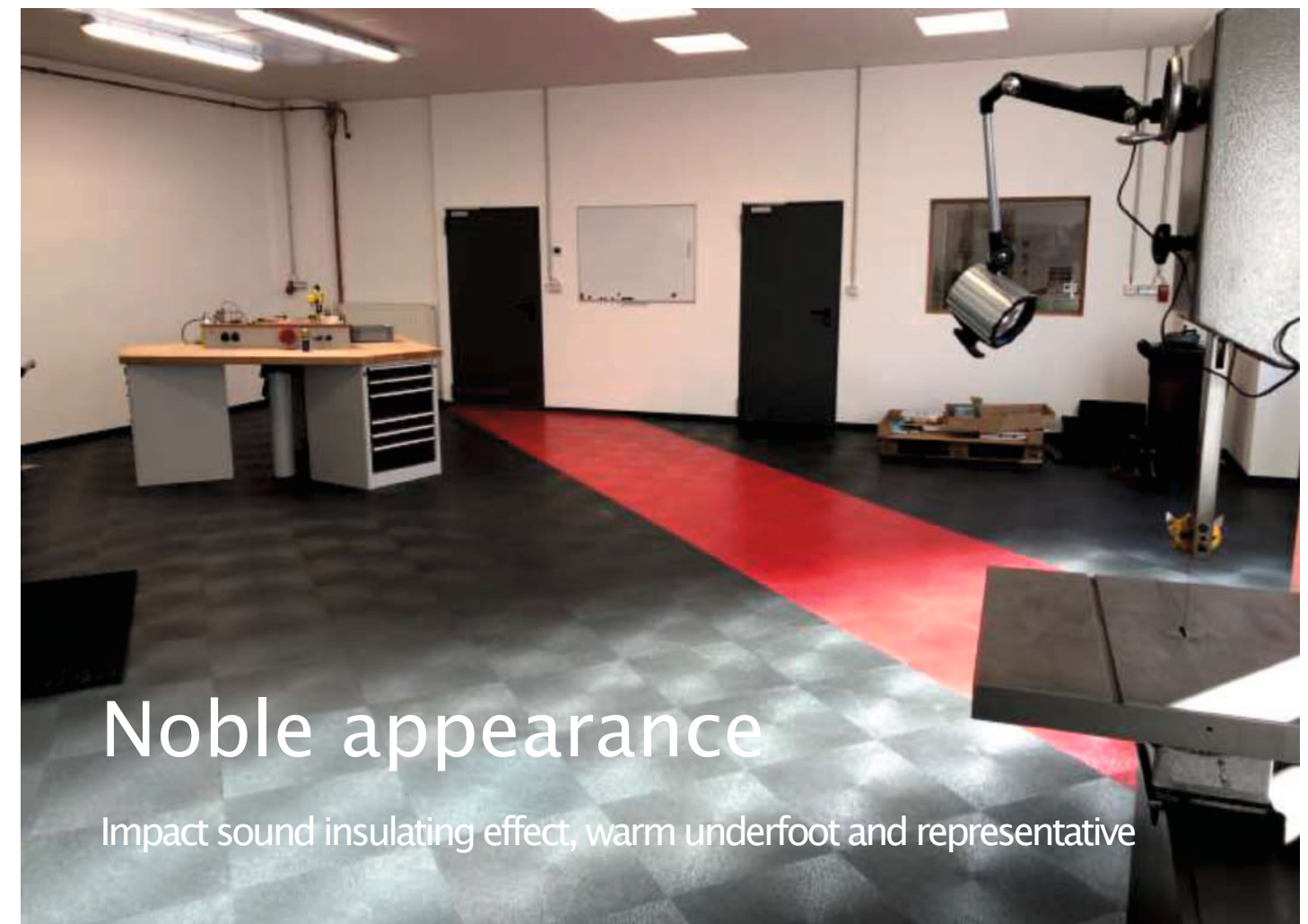
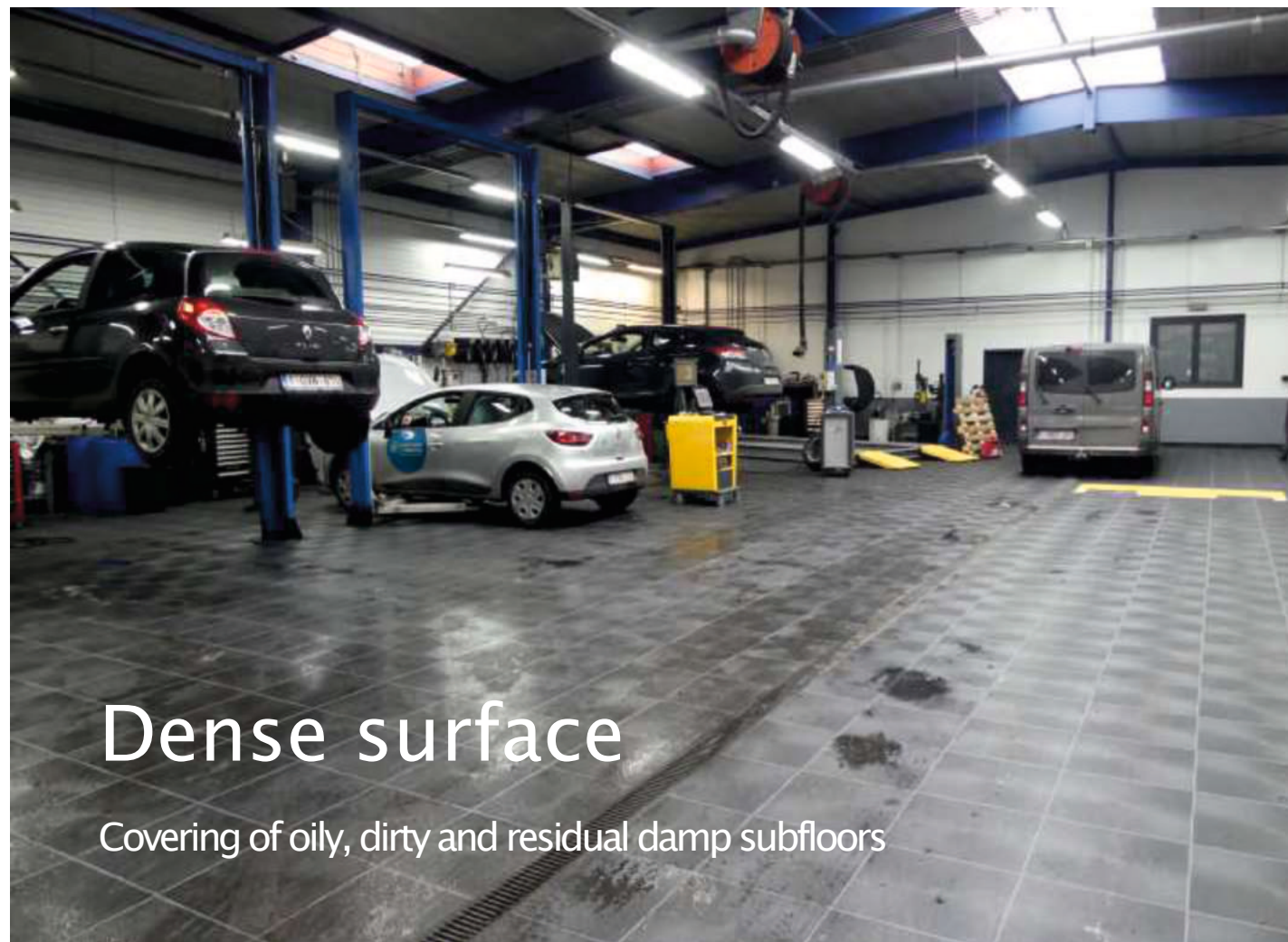


Work on

With Ibotac® Industrial Floors it is possible to work precisely on e.g. gutters, shelf feet, machines and lifting platforms. In most cases during ongoing operation.

Expansion joints to these components are sealed with Iboflex-219 joint compound.

For many components and machines, a short lift is sufficient and the panels can be slid underneath.



Ibotac®

Total load 35 tons

–with full-surface adhesion to the subfloor



The strong plastic sheet system

Whether new construction, repair or renovation

These attractive, hygienic, durable

and resistant floor systems meet all

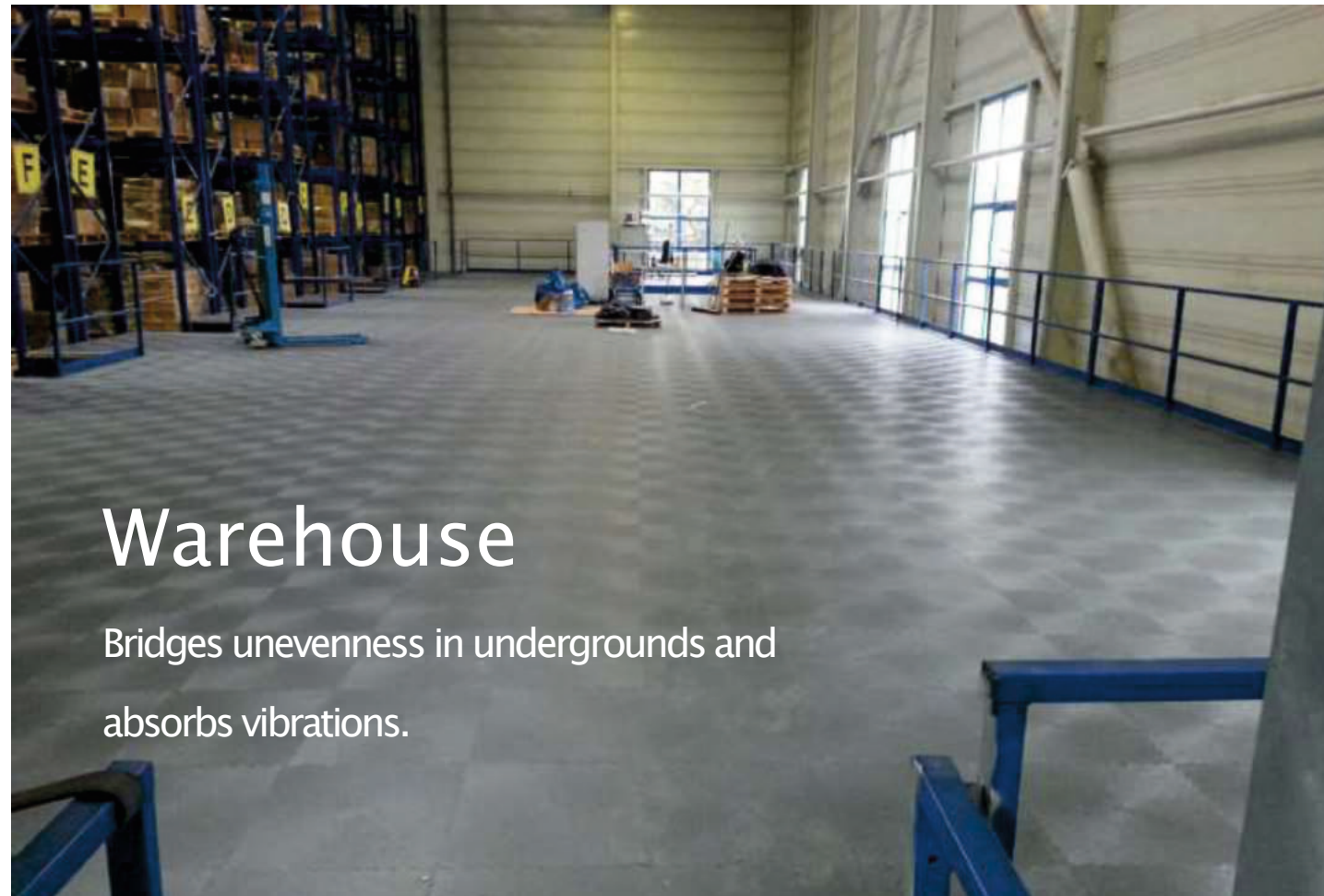
requirements. They are easily adaptable

to all needs, both in appearance and surface finish.



Total load 45 tons

– with full-surface adhesion to the subfloor



Ibotac®STEP, FAST, KLINK

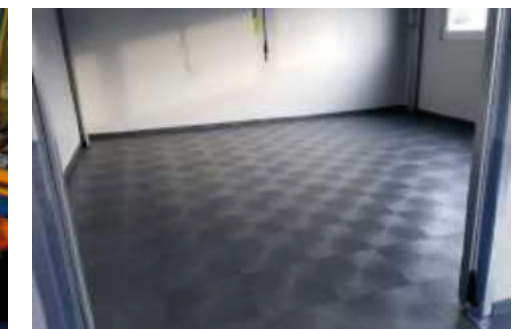
From balconies, offices, storage areas, warehouses to heavy loads.

Ibotac® industrial flooring offers you all the possibilities.

Ideal for balconies, offices or storage areas in the middle of the hall, which will be moved or dismantled later. Relocate storage areas without complete clearing out the shelves.

Our floors absorb vibrations and bridge unevenness on working platforms and high-bay racking.

Halls and storage areas can be laid and used quickly. After laying, a significant reduction in dust and noise is noticeable. The service life of the tires of pallet trucks and forklifts is extended and damage due to vibrations is reduced. Standing workplaces can be designed ergonomically, warm to the feet and variable. Trade associations advise not to work on hard concrete, e.g. to protect back and knees.





Food industry

Thermal and chemical welding creates a liquid-tight floor



Food warehouse

No dust formation



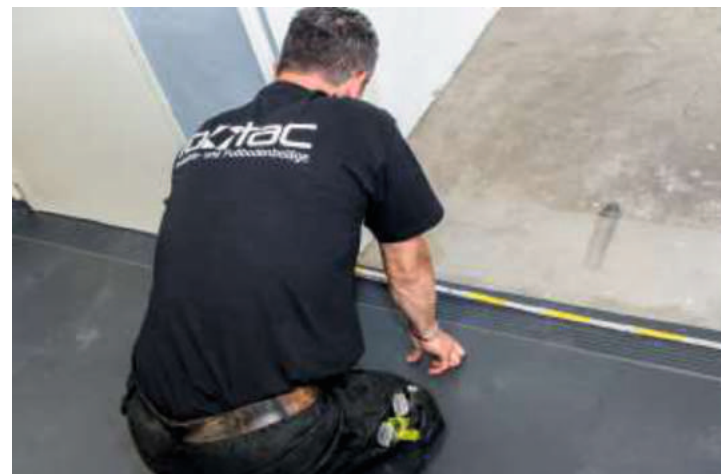
Industrial kitchen

Non-slip due to surface structure



Food production

Easy care, easy maintenance



Ibotac®FAST

Workshop Laying

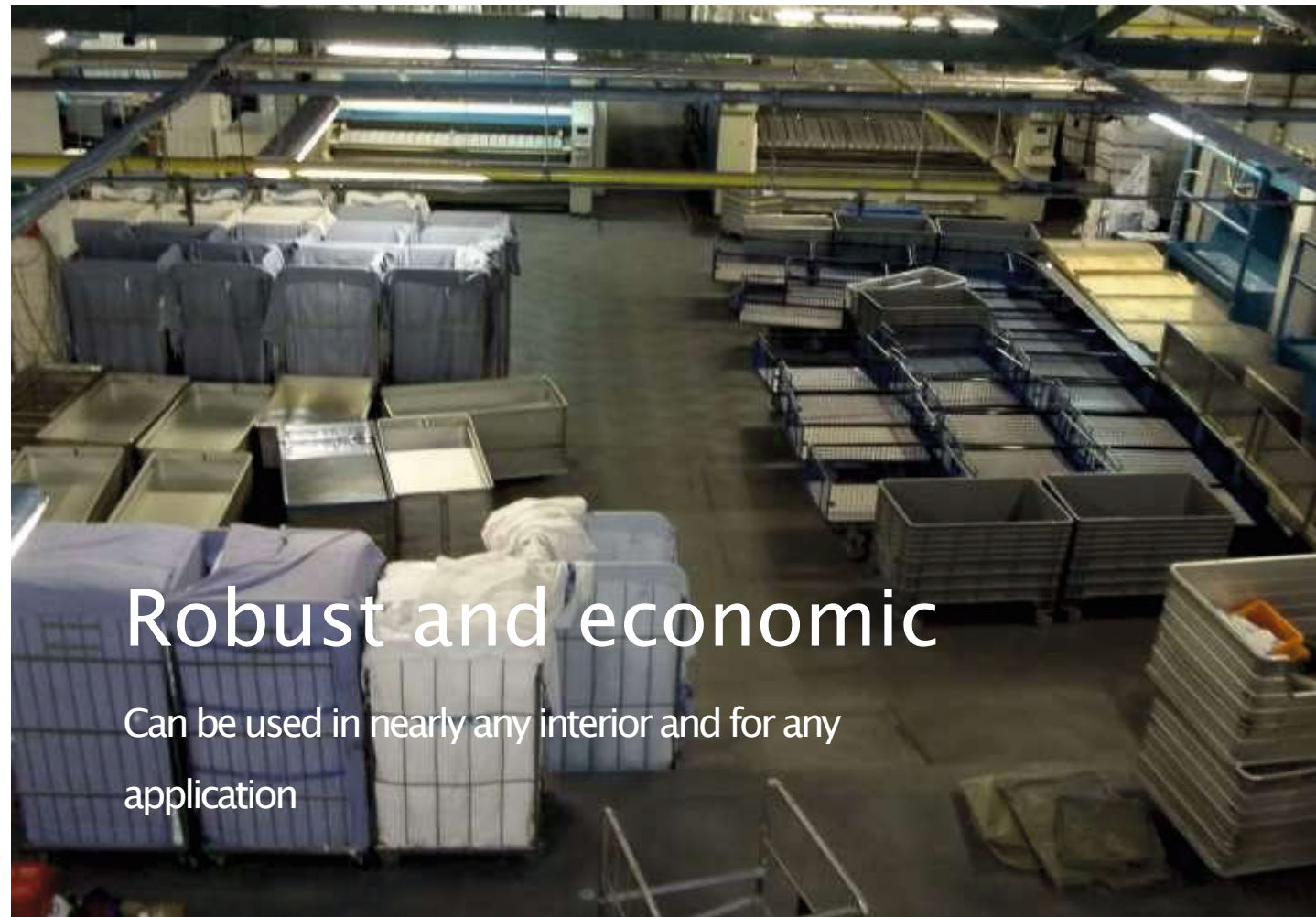
We can lay our floors in small sections thanks to the panel format.

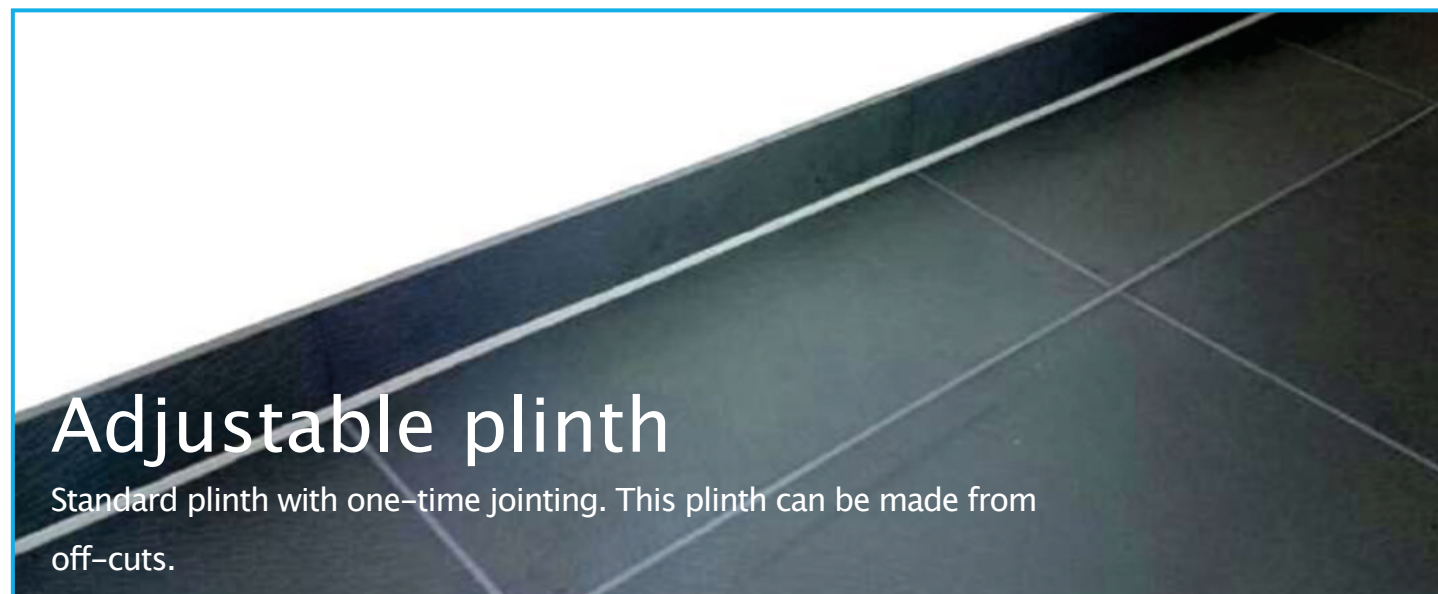
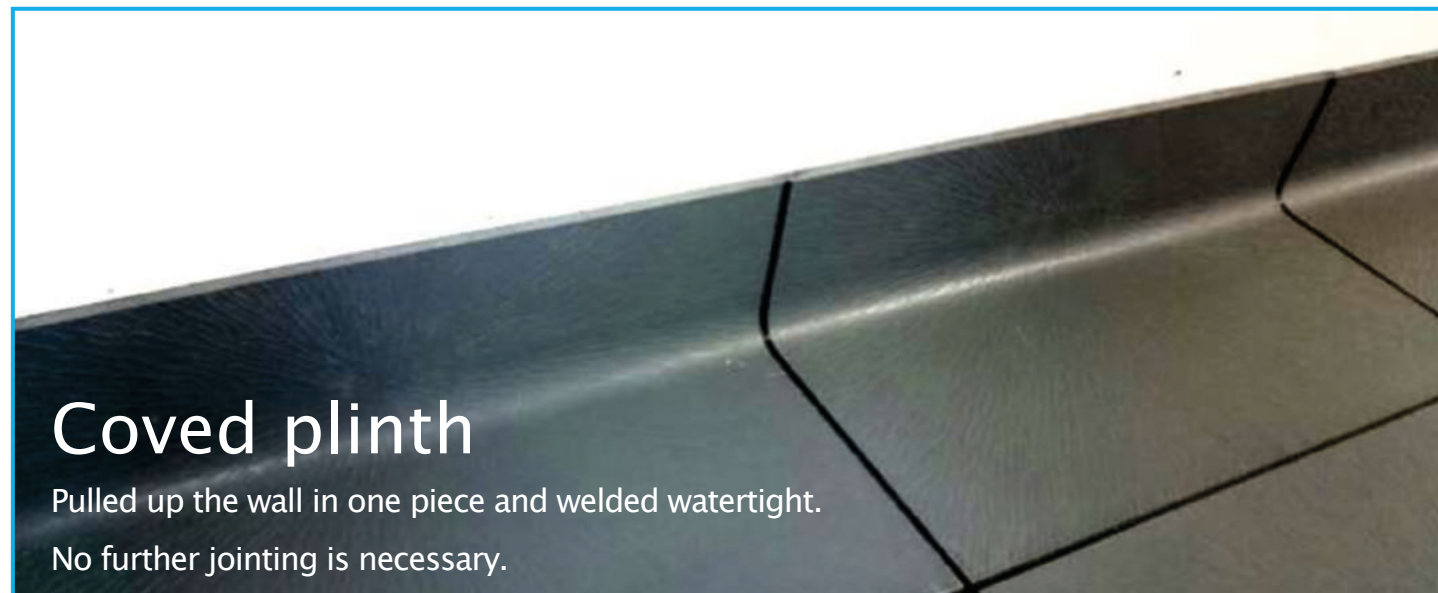
This allows the operation or production to continue during the installation.

Machines, devices and shelves are precisely adjusted or, if possible, briefly lifted to slide the panels underneath. Sofort danach ist der Boden belastbar mit Transport- und Hubwagen.

Ibotac® industrial flooring is robust and durable. It can be used to achieve a uniform, clean appearance quickly and without disruption.

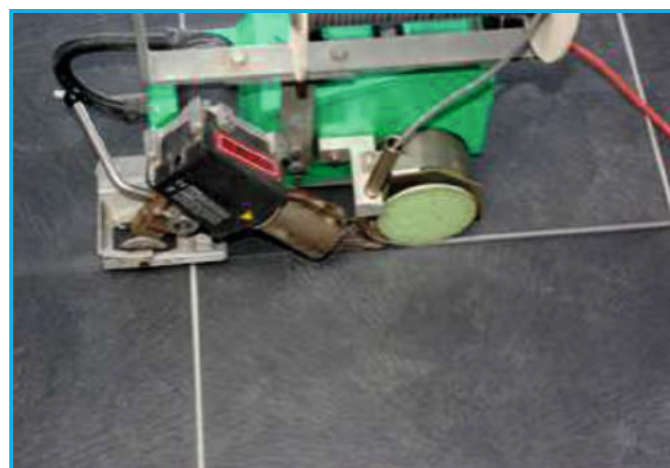
After a few days, a new and clean look appears without stopping production.





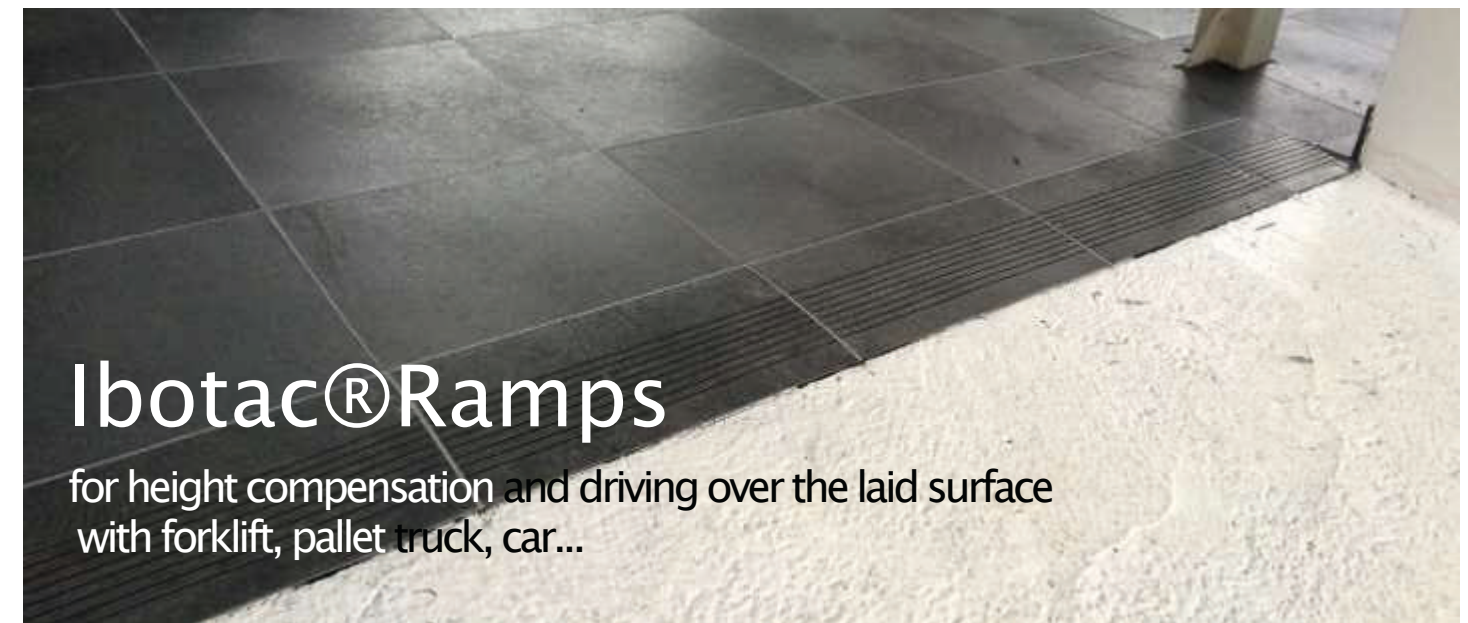
Welding cord

In many colors. Material matched to Ibotac® industrial floors.



Automatic welding machine

Thermal welding with hot air.
Liquid tight surface.



Iboflex 209

Adhesive is developed and manufactured for Ibotac®flooring.
Hardens under the influence of humidity to form a permanently elastic sealant .

Underground:

Concrete, cement, anhydrite, wood, chipboard, metals, etc.
Not suitable for bitumen–undergrounds!

Features:

- For interior and exterior (not under permanent water load), also for damp substrates.
- Free of isocyanate, solvent and silicone.
- Almost odorless, no bubbles, no shrinkage, fungus resistant.
- Absorbs mechanical and acoustic vibrations and oscillations.

Important:

This adhesive needs moisture to cure.



Hybrid 1K Polymer 219

is a high quality sealant

Hardens by absorbing humidity from the air to form a permanently elastic sealant.

Features:

- Adhesive and sealing applications for interior and Exterior
- Free from isocyanate, solvent and silicone
- Fast curing
- UV, weather, (salt) water,, moisture and chlorine resistant.

- anti-fungal, odorless and paintable

Areas of application:

- Universal filling and joint sealant, suitable for connection joints, seams, gaps, cracks and unevennesses. (no expansion joints)
- Universal, assembly and construction adhesive
- Specially for adhesive bonding and jointing of Ibotac® flooring

Processing:

Processing temperature: +5°C to +30°C



Ibo–Floorcleaner

Re–greasing, antistatic special wiping care

Areas of application

Anti-slip and antistatic wipe care for maintenance cleaning and care of linoleum, PVC and rubber flooring as well as ESD–flooring made of epoxy resin in EPA zones of the computer, electronics and automotive industries. Electrostatic charges are reduced and the formation of an electrically insulating layer and running marks is prevented.

Application

Mix 50 –200 ml depending on the degree of soiling in 10 L water (0.5 –2.0 %). Moisten the floor with the mop solution, allow to act briefly and absorb the dirt solution. Wipe with fresh Ibo–Floorcleaner solution. Cleaning by floor cleaning machine in one–step method with a dosage of 0.5 –2.0 % (50 – 200 mL per 10 L of cleaning solution) in the tank. For maintenance, Ibo–Floorcleaner can be used pure.



Cold welding agent pasty or liquid

For bonding the individual Ibotac®Step panels. Results in a strong and watertight bond of the step seam. Can also be used for bonding and sealing all seams of PVC flooring and PVC foils. Contains solvents!



Renovation of old, oily, cracked and heavily stressed surfaces

Very often, subfloors are no longer in an acceptable condition after years of intensive use. The floor is damaged and further destroyed by oil, chemicals or mechanical stress. It collects dust, can no longer be cleaned, and is simply unsightly.

Ibotac industrial floors are an alternative for the refurbishment of halls, workshops, production and storage areas. Our flooring systems are also suitable to renovate sales and exhibition areas.

We can offer the right solutions for almost all problems with old substrates.

On oily and chemically contaminated floors, our systems can be laid floating, or for heavier loads, glued to special fiberglass-reinforced underlays, for loads up to over 10 tons. Step or click floorings can prevent oil or other chemicals from seeping back into the subfloor.

If the screed or concrete is still new or damp for other reasons, you can still install our floorings. Thanks to our special adhesive, we do not need any additional moisture barrier for possible bonding. This saves time above all.

If you have substrates that are sensitive to waterlogging, we can solve this problem with our Steam floors, which ensure ventilation and drainage of moisture.

With our selection of different panel thicknesses and connection systems, you can choose the right surface for every possible load. From pedestrians to pallet trucks to cars, forklifts and trucks. We have the right floor and installation method for all needs.



Results that are worth seeing!

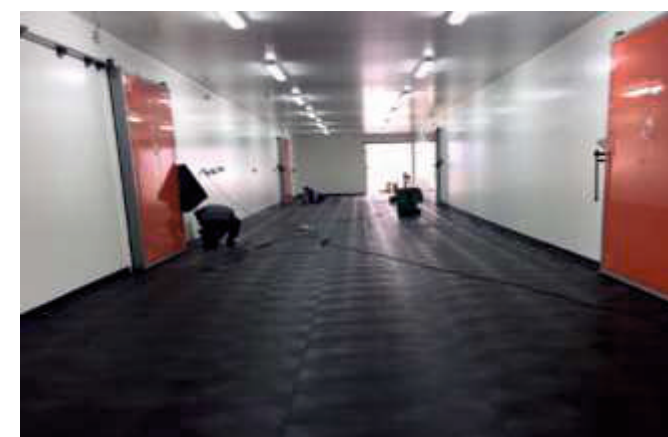
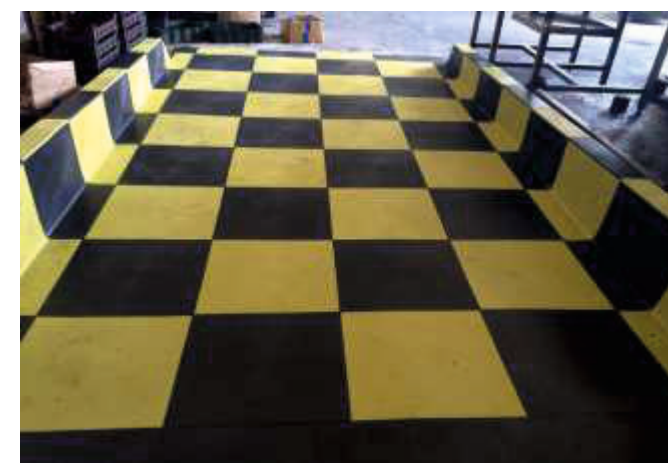
Old subfloors are relieved by laying Ibotac® floors and thus they are protected from further damage. In the same way, you can place sensitive parts on our floors without damaging them.

Ibotac® industrial floors are flexible, quick and easy to install. Thanks to our panel system, even permanently used areas can be processed step by step. We are specialized in carrying out this work during ongoing operations.

With Ibotac® industrial floors, one achieves a significant upgrading of surfaces. In a relatively short time, old, dirty and broken surfaces are transformed into visually appealing surfaces.

The new industrial floor can be quickly reused for all kinds of loads, because by choosing the right flooring and the optimal installation method, we adapt to the needs of use.

You get a floor that is easy to clean, which brings other benefits to employees such as ergonomics, sound reduction and insulation against cold.



Let us surprise you with what **Ibotac®**Floor can do.



TECHNICAL DATA

| STRAIN | | |
|--------------------|----------|--------|
| TECHNICAL FEATURES | NORM | Value |
| Strain class | EN 685 | 34-43 |
| Total thickness | EN 428 | 7-10mm |
| Hardness | ISO 868 | 92-94 |
| Residual pressure | EN 433 | 0,08 |
| Abrasion | EN 660-2 | 417 |

| RESISTANCE TO CHEMICALS | | |
|--------------------------|--|---|
| Machine oil | | No change on the specimen material after 72 hours |
| Acetic acid | | |
| Sulfuric acid 1:1 | | |
| Potassium hydroxide 10 % | | |
| Toluene | | |

| CE Indicator -EN 14041 | | |
|--|---------------|--|
| TECHNICAL FEATURES | NORM | VALUE |
| Sliding resistance | EN 13893 | DS below the classification limit (1,8cm³ /dm³) |
| Room for change | EN 13553 | |
| Fire behavior | EN 13501-1 | Bfl-s1 (B1) |
| VOC (qualitative) | EN 17025 | Passed |
| Pentachlorophenol | EN 17025 | <0,1mg/kgbestanden |
| VOC-Emissions | DiBt | Passed |
| Antistatic under standard conditions (25% rel. humidity under 25°C room temperature) | EN 1815 | 4,4 KV (not fulfilled) |
| Antistatic under everyday conditions (50% rel. humidity below 25°C room temperature) | EN 1815 | 1,8 KV (fulfilled) |
| Thermal resistance (suitability for underfloor heating) | EN 14041:2004 | 0,07m²k/W (fulfilled) |
| Total weight | EN 430 | 10mm-15kg; 7mm-11kg |
| Plate size | | 490 mm x 490 mm |

Tested at:
TFI Textiles & Flooring Institute GmbH Aachen
IMS A.D. Belgrad Institute for Material Testing





IBOTAC– Industrial floors

www.ibotac.de

Germany

Ibotac GmbH & Co.KG

Duerener Straße 485

52249 Eschweiler

Fon : +49 (0) 02403 - 80 91 214

Srbija

Bimeco doo

Čika Stevina 8

21000 Novi Sad

tel : +381 (0) 21 - 3007 166

e-mail: office@bimeco.rs

www.bimeco.rs