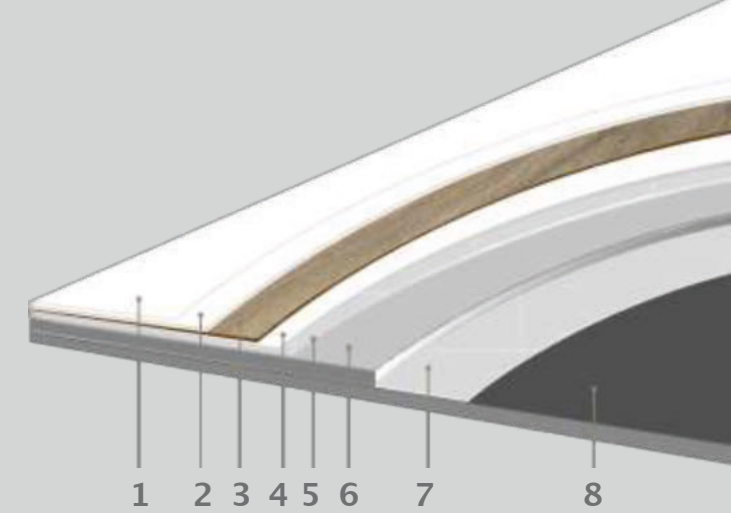




BITEO

Why BITEO- Designfloor?

1. Protectonite® PU
2. Crosslink wear layer
3. Design
4. Pressure layer
5. Glass fleece
6. Support layer
7. Glass fleece
8. Glassfiber cross-linked back



Product structure

Thanks to a unique manufacturing process, Ibotac® can provide extremely realistic imitations of wood and stone. With the certified production process Ibotac® improved the multilayer structure to make the floor extra strong and durable. Combined with a **fiberglass cross-linked back** with **two times glass fleece** in the upper part, we achieve **outstanding dimensional stability!**

This is how Ibotac® develops its **design**: With unique printing technology, large cylinders and extra large repeats we produce an authentic floor, which has hardly any repetition of tiles. The surface is applied with **Protectonite® PU**, an additional polyurethane layer. Optimal protection against scratches and dirt. This particular layer is a high quality PU, but it is also particularly cross-linked. This makes our protective layer stronger and more resistant to stains than other vinyl coverings. An additional **crosslink wear layer** is applied on top of the wear layer. This process provides a stronger, more stable and durable result than a conventional wear layer. Due to the certified construction with a **double fiberglass layer** and a **fiberglass cross-linked back**, we achieve extremely high dimensional stability.



ICO 25
66 x 33 cm

Liquid-tight



TC 76
61 x 61 cm



UPS 72
61 x 61 cm



TSR 32
66 x 33 cm



TSR 34
66 x 33 cm



TSR 40
66 x 33 cm

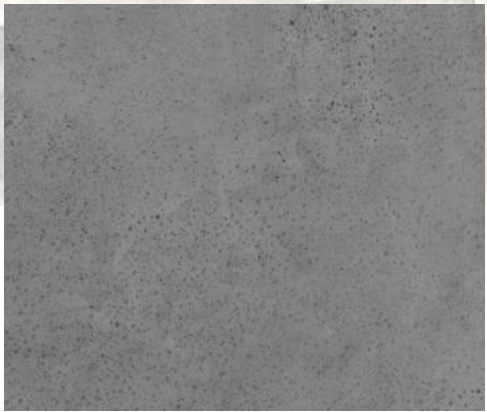


UDS 92
66 x 33 cm



THS 26
61 x 61 cm

TCS 34
61 x 61 cm



THS 26
61 x 61 cm



TCS 34
61 x 61 cm



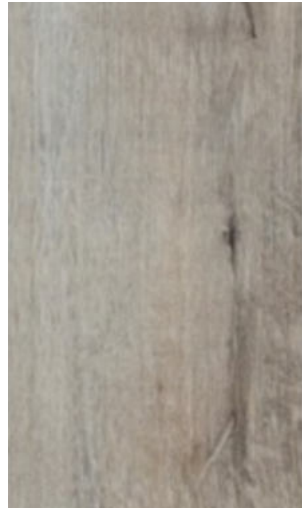
TC 45
66 x 33 cm



TC 45
66 x 33 cm



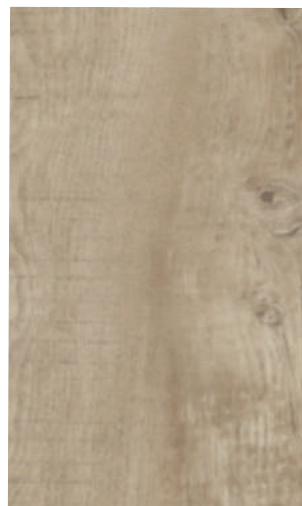
TC 86
66 x 33 cm



IMO 38
66 x 33 cm



IMO 40
66 x 33 cm



IMO 25
66 x 33 cm



IMO 70
66 x 33 cm

ICO 25
66 x 33 cm

BITEO-Designfloor offers you numerous advantages compared to conventional solutions:

- Time-saving: 4 to 8 times faster laying, no empty space, possibly in night work, so the store remains open during the day, without loss of sales or customers
- Cost-saving: usually no priming and filling, installation also on problematic floors
- Material-saving: up to 90 % less waste material
- Flexible: loose/fixed installation allows quick replacement, easy repair
- Can be 100% deconstructed on rental sites, reusable
- Sustainable: wear-resistant, durable, easy to maintain, recyclable
- Extremely wear-resistant
- Can be driven over with pallet trucks and forklifts, etc.
- Factory-provided surface protection thanks to UV cross-linked PUR surface coating
- 16 dB impact sound insulation
- Foot warm, ergonomic material, therefore joint-friendly
- Attractive color palette, own design possible
- Very good price/performance ratio

Even minor remedial work on the floor can significantly disrupt efficient operations, resulting in high costs.

Hollow, broken stone tiles, holey screeds and damp or even oily substrates cause a technical debacle. They severely impair the workflow in sales areas. For this purpose, we offer you an economical and fast solution with the loose-laid floor coverings from Ibotac.

Biteo-Designfloor is an extremely resilient and dimensionally stable solution due to the high-quality materials and careful, certified production technology. The Floor coverings can be laid without gluing (even on old tiles). Substrate preparation is reduced to a minimum. You can also renovate individual areas quickly and in an extremely uncomplicated manner, step by step, without any major downtimes.

You save costs! Due to the proven locking system, the cohesion is stable and durable, even for the highest object stresses. This offers you security in daily use!

Support throughout the entire project planning to relocation

Need the look of a wood or stone floor, without the usual effort? BITEO- Designfloor is the perfect solution for your project. These floors, which are water-resistant, easy to install, robust and easy to maintain, are very popular for good reason. Practical and beautiful.

- Designed for high traffic environments
- An extremely fast installation - even on odd subfloors
- Ideal for renovation projects and new buildings
- Powerful and visually attractive

Intelligent sustainability

We offer products that can be installed without adhesives, eliminating this otherwise polluting factor and ensuring 100% reuse.

Soundproofing

Better impact sound insulation and less noise in rooms with a high volume of visitors. This is guaranteed by BITEO- Designfloor with its sound-absorbing back. (16 dB)

Hygienic and easy to clean

No expensive cleaning agents are needed to keep your flooring in top shape. No dust mites or other allergens accumulate on the BITEO Designfloor due to the surface.

Slip and shock resistant

Our floors have been extensively tested under critical conditions. The BITEO- Designfloor has a slip value of R10 (pendulum test and "inclined plane").



IMO 38
66 x 33 cm

Liquid-tight

Flooring!!!

This is what we do

This durable vinyl flooring is a perfect blend of quality and good features. The 0.55 mm wear layer makes Biteo-Designfloor ideal for contract use, even in high traffic environments. With a 10 year warranty, this range will transform interiors for years to come.

Important facts

- From 500 square meters, there are approx. 50 additional stone optics and approx. 70 wood optics to choose from
- 10 year warranty
- 0,55 mm wear layer



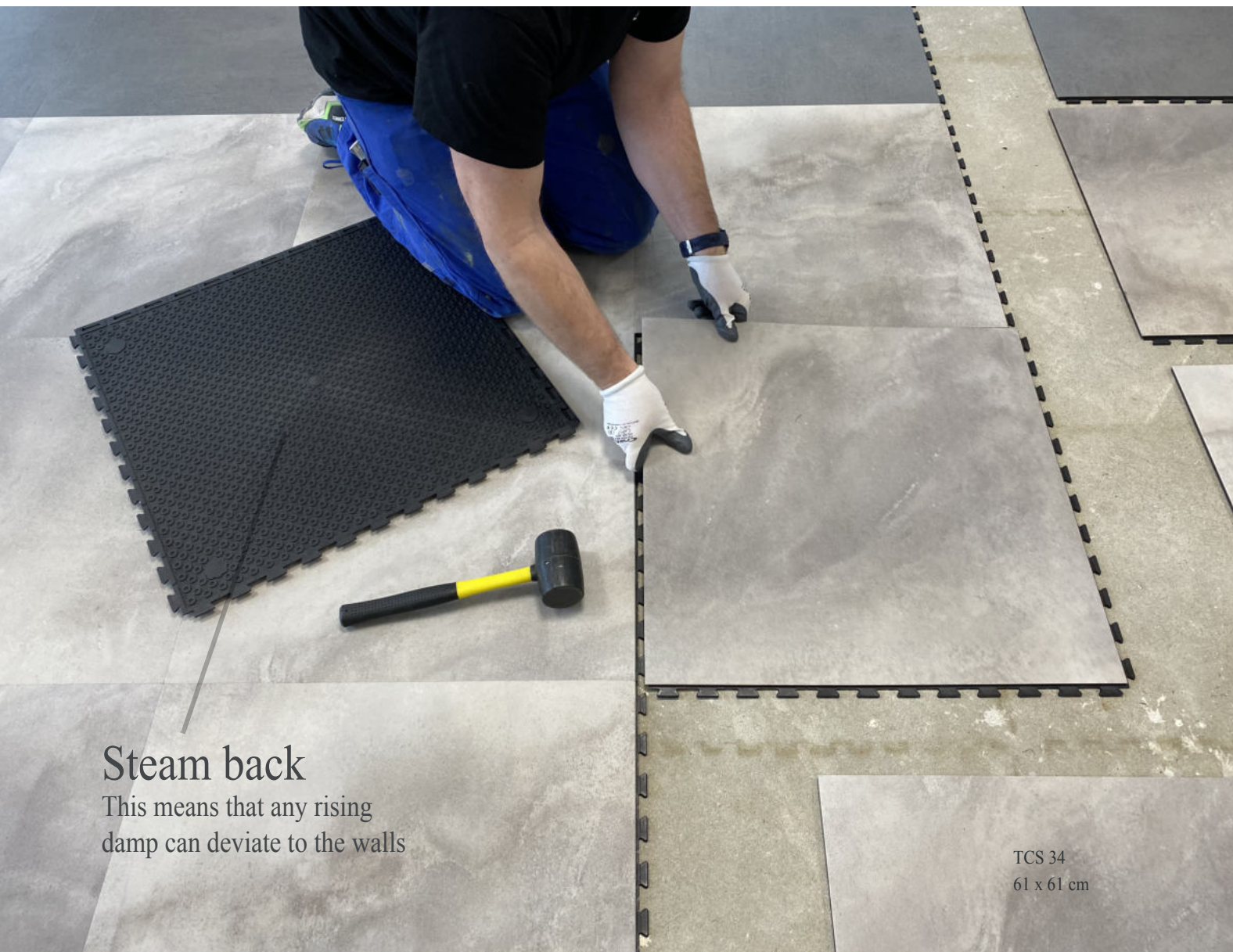


TSR 40
66 x 33 cm

Liquid-tight

Due to the certified construction with a double layer of fiberglass in the upper part and a fiberglass cross-linked Back. we achieve extremely high dimensional stability. This means that it can be laid mostly floating and without gluing to the subfloor.
Even with this installation, Biteo-Designfloor is loadable with pallet trucks, forklifts, etc.

- Optimally suitable for supermarkets and store fitting
- Without gluing to the subfloor
- Almost dust-free working
- Suitable for forklift traffic in floating installation



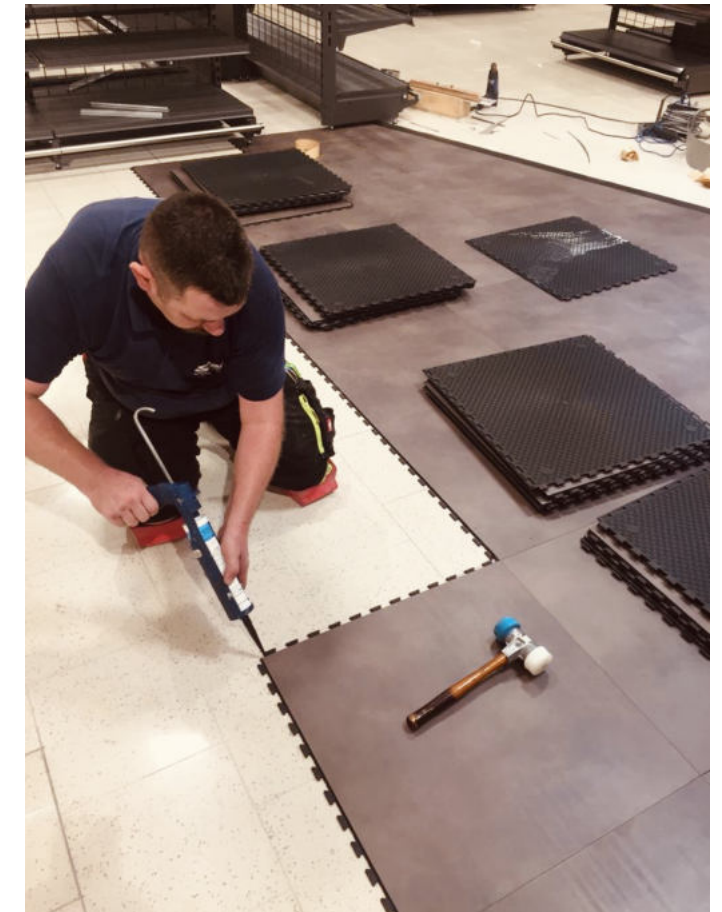
Loose laying

The tiles are laid loosely (without gluing to the subfloor), which in practice means that the floors can be laid very quickly and without costly preparatory work, disposal costs, without noise and with only minimal interruptions to operations. In addition, the floor can be picked up and relaid again and again. In other words, a sustainable investment.

Liquid-tight and floating installation possible on almost all undergrounds



Thanks to our certified click connection and the use of joint compounds tested for this purpose, you get an absolutely liquid-tight BITEO Designfloor. When gluing, the joint compound is inserted exactly between two plates of the click joint, so that the joint compound does not leak upwards.



Undergrounds

Biteo-Designfloor can be laid loosely on various substrates, e.g. concrete, screed, ceramics, tiles, etc.. In addition, Biteo-Designfloor has a significantly reduced conversion time. Just as easily you can pick up the tiles and lay them somewhere else. The condition is that the subfloor is reasonably solid and straight. With ceramic tiles there is no problem with the formation of cracks or narrow joints.

Repair

Repair is quite simple to perform. Take out the damaged tiles and replace them with new tiles. The advantage of this is that you always have the same look, even repaired spots are not visible. Of course, the installation takes place without dust formation and without drying time, so that the Biteo-Designfloor can be walked on and loaded directly.



Custom design

Technical data

Connection	Click connection concealed
Tile size	66 cm x 33 cm// 61 cm x 61 cm
Thickness of the useful layer	0.55 mm
Total thickness	8.2 mm
Weight	11 kg/m
Material useful layer	Fiberglass reinforced PVC
Material support tile	100% PVC
Surface treatment	Protectonite (PUR)
Surface structure	Design
Slip value	DS / R10
Fire behavior	B1fl-S1
Backside	Drainage knobs
Floor heating	suitable
Wear behavior	class T
Operating class	23-33-42
Liquid-tight floor	With the use of joint compound
Use class	Heavy and light commercial vehicles
Light fastness	>6
Dimensional stability	≤ 0.15
VOC-Emissiones	Certified
Antistatic	<2kV
Furniture push test	No cracks, no damage
Impact sound improvement measure	16 dB

Environment friendly

- 100% recyclable (at the end of the useful life, we can pick up the tiles and recycle them)
- 100% Made in Europa





BITEO-Designfloor

www.ibotac.de

Germany

Ibotac GmbH & Co.KG

Duerener Straße 485

52249 Eschweiler

Fon : +49 (0) 02403 - 80 91 214

Srbija

Bimeco doo

Čika Stevina 8

21000 Novi Sad

tel : +381 (0) 21 - 3007 166

e-mail: office@bimeco.rs

www.bimeco.rs